

A Family Guide To Next Steps

When Your Child In Early Intervention Turns 3

Families have a choice.



Maryland's
*Birth
 through
 Five*

MARYLAND STATE DEPARTMENT OF EDUCATION
 Division of Special Education/Early Intervention Services
 Early Childhood Intervention and Education Branch
 Maryland Infants and Toddlers Program/Maryland Preschool Special Education Services

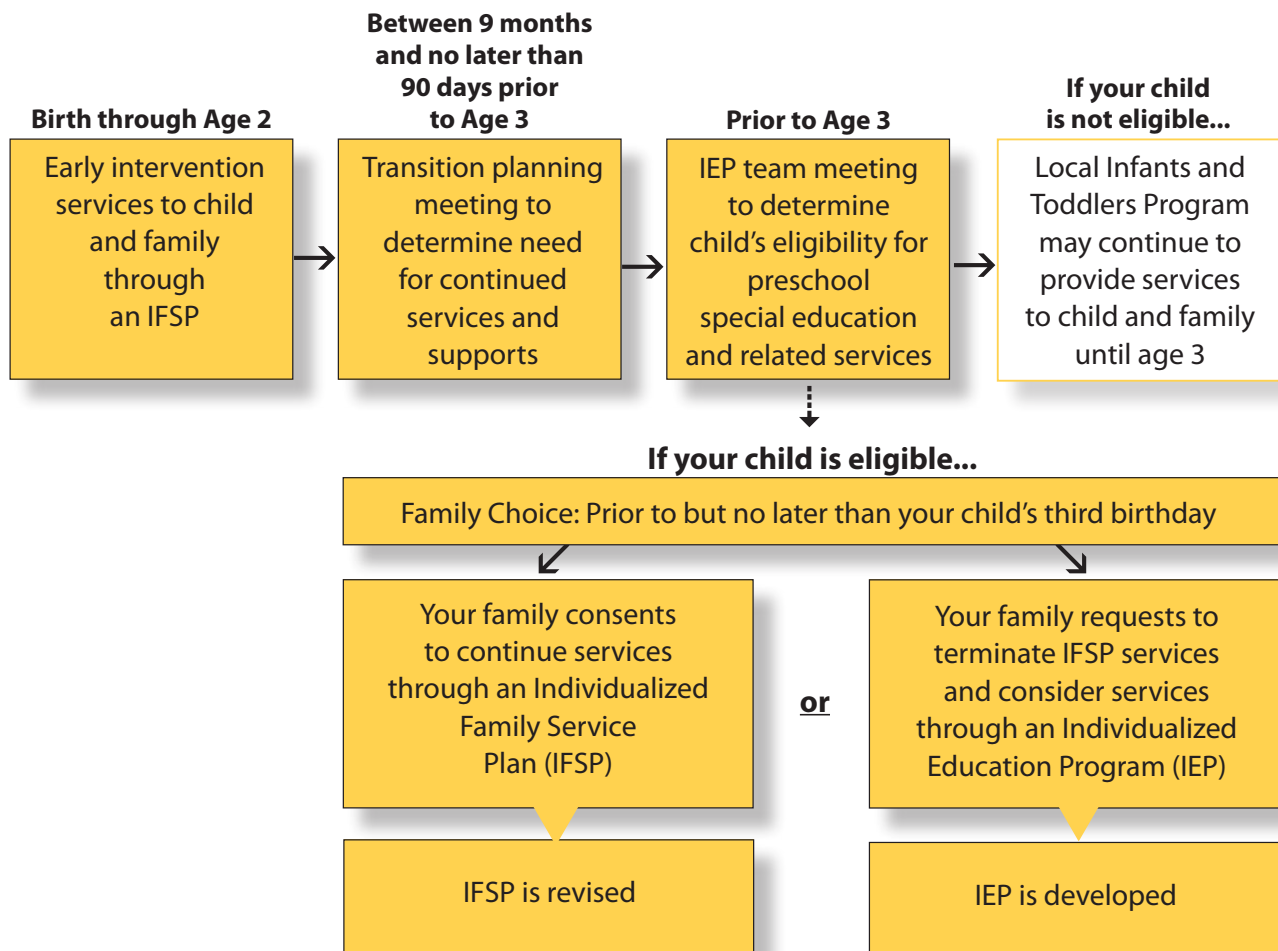
**Early
 Childhood
 Intervention
 & Education** System of Services
 For Young Children
 With Disabilities
 and Their Families



Before Your Child Turns 3

Prepare For Next Steps in Early Childhood Intervention and Education

The Maryland State Department of Education (MSDE) offers families the option to extend early intervention services through an Individualized Family Service Plan (IFSP) after age 3 until a child's 4th birthday. As part of this option, by age three, your family can choose to continue services through an IFSP. Children currently enrolled in a local Infants and Toddlers Program **and** who are found eligible for preschool special education and related services will have the opportunity to continue services through an IFSP **or** move to an Individualized Education Program (IEP).





From 3 to Age 4

Choosing to Receive Services Through the IFSP Option or Through the IEP Option

Individualized Family Service Plan (IFSP) Option		<u>or</u>	Individualized Education Program (IEP) Option	
Services Through An IFSP	To choose the IFSP Option, your child and family must have a current IFSP through a local Infants and Toddlers Program <u>and</u> your local school system must have determined that your child is eligible for preschool special education and related services.		To choose the IEP Option, your local school system must have determined that your child is eligible for preschool special education and related services.	Services Through An IEP
	Individualized <i>Family Service Plan</i>		Individualized <i>Education Program</i>	
	<i>Service coordination</i> to support IFSP implementation across agencies		<i>IEP team process</i> to ensure IEP implementation	
	Services in <i>natural</i> environments		Services in the <i>least restrictive</i> environment	
	<i>Continuous year-round</i> services		<i>Extended school-year</i> services, if the child is eligible	
	<i>Family support and training</i> through IFSP outcomes		<i>Parent education</i> through some services and programs	
	<i>IFSP includes an educational component</i> to continue the child's school readiness skill development		<i>Child receives preschool special education and related services</i> to continue school readiness skill development	
	At any time before your child reaches 4 years of age, you may choose to request termination of IFSP services and consider preschool special education and related services through an IEP. IFSP services continue until services through an IEP begin.		Once you make the choice (through written notification to the local Infants and Toddlers Program) to terminate services through an IFSP and pursue services through an IEP, the choice to return to services through an IFSP is no longer available.	

To Help Your Family Choose:

Implementation of service delivery models and location of services vary through the local jurisdictions in Maryland. Your local Infants and Toddlers Program will support you in making the best choice that meets the needs of your child and family. Please see inside for a side-by-side look at the IFSP and the IEP option.

In accordance with IDEA 2004, 20 U.S.C. sec.1435 and State policies and procedures, parents are required to receive this Annual Notice of the Extended IFSP Option to assist in decision-making.

To Help Your Family Choose

A Side-By-Side Look at the IFSP and IEP Options

Individualized Family Service Plan (IFSP) Option

or

Individualized Education Program (IEP) Option

Services Through an IFSP

Services Through an IEP

Free Appropriate Public Education

- Maryland assures a free appropriate public education (FAPE) for all students with disabilities, birth through the end of the school year in which the student turns 21 years old.
- While all eligible children are entitled to a free appropriate public education, the service models and types of services vary.

- Maryland assures a free appropriate public education (FAPE) for all students with disabilities, birth through the end of the school year in which the student turns 21 years old.
- While all eligible children are entitled to a free appropriate public education, the service models and types of services vary.

System of Payment

- Parents are not charged for services.
- Medicaid, with parental consent, may apply to health-related services and case management only.
- Private insurance, with parental consent, may apply to health-related services only for children who have both private insurance and Medicaid coverage. If denied by private insurance, Medicaid is billed. If paid by private insurance, in rare instances, parents are reimbursed costs.

- Parents are not charged for services.
- Medicaid, with parental consent, may apply to health-related services and case management only.
- Private insurance, with parental consent, may apply to health-related services only for children who have both private insurance and Medicaid coverage. If denied by private insurance, Medicaid is billed. If paid by private insurance, in rare instances, parents are reimbursed costs.

Individualized Plan or Program

- An Individualized Family Service Plan (IFSP) means a written plan for providing early intervention and other services to an eligible child and the child's family.
- The IFSP is reviewed at least every six months and the IFSP is revised at least annually by the IFSP team, which includes the child's parent.
- The IFSP includes present levels of development; family concerns, priorities, and resources; measurable child and family outcomes; and early intervention services and service linkages.
- The IFSP specifically requires the designation of a service coordinator to ensure appropriate implementation and coordination of the plan across agencies with which the family is involved.
- The IFSP focuses on both the child and the family within their daily routines.

- An Individualized Education Program (IEP) means a written plan for providing special education and related services to a student with a disability.
- The IEP is developed, reviewed, and revised at least annually by an IEP team, which includes the child's parent.
- The IEP includes present levels of academic achievement and functional performance, measurable annual goals with benchmarks or short-term objectives, special education and related services and supplementary aids, program modifications and supports, and individual accommodations as necessary.
- The IEP focuses primarily on how the child's disability affects the child's participation in appropriate activities.

In accordance with IDEA 2004, 20 U.S.C. sec.1435 and State policies and procedures, parents are required to receive this Annual Notice of the Extended IFSP Option to assist in decision-making.

To Help Your Family Choose

A Side-By-Side Look at the IFSP and IEP Options, continued

Individualized Family Service Plan (IFSP) Option

or

Individualized Education Program (IEP) Option

Services Through an IFSP

Services Through an IEP

Parent Consent

- The contents of the IFSP are fully explained to the parent and informed written consent from the parent is obtained before early intervention services described in the IFSP begin.
- If the parent does not provide consent with respect to a particular early intervention service, or if the parent withdraws consent after first providing it, that service may NOT be provided.
- **Only** the early intervention services to which parental consent is obtained are provided.

- A parent is required to consent for evaluation and the special education and related services within the child's IEP before services are provided.
- If, at any time after the initial provision of special education and related services, the parent revokes consent in writing for the continued provision of special education and related services, the public agency must terminate the provision of **all** services specified in the child's IEP.

Notice Of Procedural Safeguards

- Parental notice includes:
- Opportunity to Examine Records
 - Prior Notice
 - Native Language
 - Parent Consent
 - Parent Surrogate
 - Dispute Resolution
 - Written State Complaint
 - Impartial Due Process Complaint
 - Resolution Session
 - Services During Pendency of Proceeding
 - Mediation
 - Confidentiality
 - Attorney's Fees

- Parental notice includes:
- Opportunity to Examine Records
 - Prior Notice
 - Native Language
 - Parent Consent
 - Parent Surrogate
 - Dispute Resolution
 - Written State Complaint
 - Impartial Due Process Complaint
 - Resolution Session
 - Services During Pendency of Proceeding
 - Mediation
 - Confidentiality
 - Attorney's Fees
 - Independent Educational Evaluation
 - Discipline of Children with Disabilities
 - Transfer of Rights at Age of Majority

In accordance with IDEA 2004, 20 U.S.C. sec.1435 and State policies and procedures, parents are required to receive this Annual Notice of the Extended IFSP Option to assist in decision-making.

To Help Your Family Choose

A Side-By-Side Look at the IFSP and IEP Options, continued

Individualized Family Service Plan (IFSP) Option

or

Individualized Education Program (IEP) Option

Services Through an IFSP

Services Through an IEP

Types of Services

Early intervention services necessary to meet the unique needs of the child and the child's family are provided. Services include special instruction designed to meet the developmental needs of a young child with a developmental delay or disability.

Early intervention services may include, but are not limited to:

- Transportation
- Speech and language pathology services
- Assistive technology services, which may include assistive technology devices
- Audiology services
- Psychological services
- Physical therapy
- Occupational therapy
- Social work services
- Early identification, screening, and assessment services
- Medical services only for diagnostic or evaluation purposes
- Vision services
- Family training, counseling, and home visits
- Nursing
- Nutrition services
- Service coordination
- Respite: a child care-type service provided to enable parent(s) to participate or receive other early intervention services in order to meet the outcomes on a child's IFSP
- Continuous year-round services for all children

Special education is specially designed instruction that ensures the child access to the general education curriculum to meet the educational standards within the jurisdiction of the public agency that apply to all children.

Related services, if determined necessary, to enable the child to benefit from special education may include:

- Transportation
- Speech and language pathology services
- Assistive technology services, which may include assistive technology devices
- Audiology services
- Psychological services
- Physical therapy
- Occupational therapy
- Social work services
- Early identification and assessment services
- Medical services for diagnostic or evaluation purposes
- Vision services, including orientation and mobility services
- Parent counseling and training
- Interpreting services
- Recreation, including therapeutic recreation
- Student counseling services, including rehabilitation counseling
- School health services
- School nurse services
- Extended school year services if the IEP team determines the individual student eligible

In accordance with IDEA 2004, 20 U.S.C. sec.1435 and State policies and procedures, parents are required to receive this Annual Notice of the Extended IFSP Option to assist in decision-making.

To Help Your Family Choose

A Side-By-Side Look at the IFSP and IEP Options, continued

Individualized Family Service Plan (IFSP) Option

or

Individualized Education Program (IEP) Option

Services Through an IFSP

Services Through an IEP

Location of Services

Natural Environment

- Children are served in settings that are natural, including the home and community settings in which children without disabilities participate.
- IFSP services may be provided in a setting other than a natural environment only if early intervention and education cannot be achieved satisfactorily in a natural environment. A justification of the extent, if any, to which the services will not be provided in a natural environment is required and must be based on the needs of the child.

Examples of natural environments may include:

- Home
- Public or private community settings including but not limited to:
 - Public school preschool and pre-kindergarten programs
 - Private community preschool and pre-kindergarten programs
 - Head Start/Early Head Start
 - Judith Hoyer Center Partnerships
 - Child care centers
 - Family child care providers
 - Parks and recreation programs
 - Cooperative play groups
 - Libraries
 - Other child serving programs

Least Restrictive Environment

- To the maximum extent appropriate, students with disabilities, including students in public or private institutions or other care facilities, are educated with students who are not disabled; and
- Special classes, separate schooling, or other removal of students with disabilities from the regular educational environment occurs only when the nature or severity of the disability is such that education in regular classes with the use of supplementary aids and services cannot be achieved satisfactorily.

Examples of least restrictive environments may include:

- Home
- Public or private community settings including but not limited to:
 - Public school preschool and pre-kindergarten programs
 - Private community preschool and pre-kindergarten programs
 - Head Start/Early Head Start
 - Judith Hoyer Center Partnerships
 - Child care centers
 - Family child care providers
 - Parks and recreation programs
 - Cooperative play groups
 - Libraries
 - Other child serving programs
- Service provider location
- Public or private day school
- Public or private residential school

More resources for families:

For additional information, contact:

Local Infants and Toddlers Programs

Allegany County	301-759-2415
Anne Arundel County	410-222-6911
Baltimore City	410-396-1666
Baltimore County	410-887-2169
Calvert County	410-414-7034
Caroline County	410-479-3246
Carroll County	410-876-4437, x277
Cecil County	410-996-5444
Charles County	301-609-6808
Dorchester County	410-221-1111, x1023
Frederick County	301-600-1611 or 301-600-1612
Garrett County	301-334-1189
Harford County	410-638-3823
Howard County	410-313-7017
Kent County	410-778-7164
Montgomery County	240-777-3997
Prince George's County	301-265-8415
Queen Anne's County	410-827-0720, x4456
Somerset County	410-623-2037
St. Mary's County	301-475-4393
Talbot County	410-820-0319
Washington County	301-766-8217
Wicomico County	410-677-5250
Worcester County	410-632-5033
Maryland School for the Blind	410-444-5000
Maryland School for the Deaf	410-480-4545

Online Resources:

www.mdecgateway.org - Resources and information for families and providers of children with disabilities age birth through five

www.marylandpublicschools.org - Find IEP related resources, including:

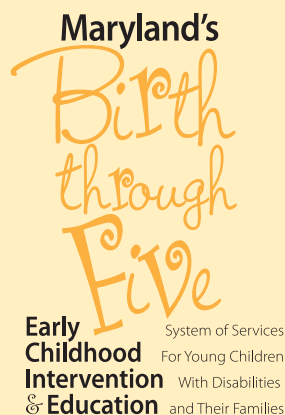
- *Building IEPs with Maryland Families: What A Great Idea! A Guide To Developing, Implementing and Reviewing IEPs For Students with Disabilities*
- *Understanding the Evaluation, Eligibility, and IEP Process in Maryland*
- *Parental Rights: Maryland Procedural Safeguards Notice*

<http://tinyurl.com/extendedifspoption> - Link to the Policies and Procedures document for the Maryland Extended IFSP Option

Additional information and resources may also be provided by the:

Early Childhood Intervention and Education Branch

Early Childhood Intervention and Education Branch
Maryland State Department of Education
Division of Special Education/Early Intervention Services
200 West Baltimore Street, 9th Floor
Baltimore, Maryland 21201
Phone: 410-767-0261
Toll Free: 1-800-535-0182
Fax: 410-333-8165



This publication was developed and produced by the Maryland State Department of Education, Division of Special Education/Early Intervention Services with funds from the U.S. Department of Education, Grant #H393A090124A, Special Education-Grants for Infants and Families "Recovery Funds" under PL 105-17/111-5 Individuals with Disabilities Education Act/American Recovery and Reinvestment Act. The Maryland State Department of Education is the lead agency for the Maryland Infants and Toddlers Program, the statewide program of services and supports coordinated by State and local agencies and organizations. The Maryland State Department of Education does not discriminate on the basis of race, color, sex, age, national origin, religion, disability, or sexual orientation in matters affecting employment or in providing access to programs. For inquiries related to Department policy, contact the Equity Assurance and Compliance Branch, Office of the Deputy State Superintendent for Administration, Maryland State Department of Education, 200 W. Baltimore Street, 6th Floor, Baltimore, MD 21201-2595, 410-767-0433, Fax 410-767-0431, TTY/TDD 410-333-6442, www.MarylandPublicSchools.org. The information in this publication is copyright free. If copied or shared by readers, please credit the Maryland State Department of Education, Division of Special Education/Early Intervention Services. For additional information, contact the Early Childhood Intervention and Education Branch at 410-767-0261.

James H. DeGraffenreid, Jr., President, State Board of Education

Bernard J. Sadusky, Interim State Superintendent of Schools

*Marcella Franczkowski, Assistant State Superintendent
Division of Special Education/Early Intervention Services*

Martin O'Malley, Governor

November 2011